



NHRA-MVC Traceability Hub (RTH)

Technical Onboarding Guide (TOG)

For Serialization



Table of Contents

1	INTRODUCTION AND COMMENTS	3
2	COMMUNICATION AND CONNECTIVITY	4
2.1	AS2 INFORMATION FOR TEST ENVIRONMENT	4
2.2	AS2 INFORMATION FOR PRODUCTION ENVIRONMENT.....	5
3	EPCIS EVENT REQUIREMENTS	6
3.1	EVENT DATA	6
3.1.1	<i>Rules for Communicating Events to the Traceability Hub.....</i>	<i>6</i>
4	PERFORMANCE GUIDELINES	7
4.1	MESSAGE FORMATS	7
4.2	DATA EXCHANGE MEDIUM	7
4.3	PARAMETERS FOR SENDING EVENTS	7
4.4	GUIDELINES FOR EVENT MESSAGES	8
4.4.1	<i>Header</i>	<i>8</i>
4.4.2	<i>General Instructions:.....</i>	<i>8</i>
4.4.3	<i>Receiving Event:.....</i>	<i>9</i>
4.4.4	<i>Commissioning Event:.....</i>	<i>9</i>
4.4.5	<i>Aggregate Event:</i>	<i>9</i>
4.4.6	<i>Ship Events.....</i>	<i>9</i>
4.4.7	<i>Voiding Shipments</i>	<i>10</i>
4.5	EPCIS MESSAGE REQUIREMENTS	10
4.5.1	<i>Standard Business Document Header Requirements.....</i>	<i>10</i>
4.5.2	<i>Event Table</i>	<i>12</i>
4.6	EVENT DEFINITIONS.....	13
4.6.1	<i>Title Tag</i>	<i>13</i>
4.6.2	<i>Trade item master data attributes</i>	<i>13</i>
4.6.3	<i>Definition for Receive Attributes.....</i>	<i>13</i>
4.6.4	<i>Definition for Commission Attributes.....</i>	<i>14</i>
4.6.5	<i>Definition for Aggregation Attributes.....</i>	<i>16</i>
4.6.6	<i>Definition for Shipping Attributes</i>	<i>17</i>
5	ACCEPTANCE CRITERIA	20
6	SAMPLE XML FILE: EPCIS 1.2 FILE FORMATS	21
6.1	EPCIS RECEIVE EVENT EXAMPLE (RECEIVING THE SSCC CASES OR PALLETS).....	21
6.2	EPCIS EVENT EXAMPLE (SHIPMENTS FROM AGENTS/DISTRIBUTORS)	23
7	CHANGE HISTORY	28



NHRA-MVC Traceability Hub	RTH-Bahrain-UG Version 1 July 2021
User Guide for In-Country AGENTS/DISTRIBUTORS	Page 3 of 41

1 Introduction and Comments

Technical Onboarding for Agents/Distributors Within the Kingdom of Bahrain

Agents/Distributors in the Kingdom of Bahrain will need to complete the Technical Onboarding process to certify they are prepared to send the proper transactions to the NHRA-MVC Traceability Hub.

Agents/Distributors must send a series of information records (Transactions) to the NHRA-MVC Traceability Hub that represent actions that commonly occur in the distribution steps of the supply chain; receiving of serialized medicines into your stock, packing (aggregation of cartons to cases, then the cases to pallets), and shipping the products to various dispensers (pharmacies, hospitals, clinics, etc.).

The NHRA-MVC Traceability Hub (RTH) is designed to allow all companies to send information to the Traceability Hub using GS1 compliant messages. This document outlines the necessary information Agents/Distributors will need to send to comply with the reporting requirements from the NHRA.

Reporting companies must cooperate in good faith with the NHRA-MVC in the development, testing, implementation, and operation of the technical interface and in sending the Transactions in accordance with the technical requirements documented in this Technical Onboarding Guide for In-Country AGENTS/DISTRIBUTORS.

- Compliance with the technical considerations captured in this Technical Onboarding Guide are non-negotiable and must be followed by the companies or their IT providers sending information to the RTH.
- The reporting companies will ensure that their IT Software Provider will adhere to all requirements and constraints identified in this Technical Onboarding Guide published by the NHRA-MVC IT Technical Support organization.
- The technical requirements described in this Technical Onboarding Guide are fixed and will not be negotiated. No deviations are acceptable.

This Technical Onboarding Guide for In-Country AGENTS/DISTRIBUTORS may need to be updated by the NHRA-MVC IT Technical Support organization to support new or modified features in the NHRA-MVC Traceability Hub. The reporting companies will ensure that their IT Software Provider will comply with all updates in a timely manner.



2 Communication and Connectivity

Connections will be established via an AS2 connection. This is a secure and robust way to verify that the structures and content are correctly formatted.

2.1 AS2 Information for TEST environment

Company Name	rfoxcel Corporation
Support Number	+1 855-209-2238
Support Email Address	nhra-mvc-support@rfoxcel.com
URL	https://rthtest.nhra-mvc.bh
IP	184.105.135.59
AS2 ID	nhramvctest
AS2 URL	https://rthtest.nhra-mvc.bh/as2/
Digital Signature	Sha256
Message Encryption	3des
Certificate	Files will be sent separately to the Technical Point of Contact
AS2 Version	1.2
MDN Delivery	Sync
File Name	Content-Disposition: filename="Filename.ext"



2.2 AS2 Information for PRODUCTION environment

Company Name	rfxcel Corporation
Support Number	+1 855-209-2238
Support Email Address	nhra-mvc-support@rfxcel.com
URL	https://rth.nhra-mvc.bh
IP	15.184.57.211
AS2 ID	nhramvc
AS2 URL	https://rth.nhra-mvc.bh/as2/
Digital Signature	Sha256
Message Encryption	3des
Certificate	Files will be sent separately to the Technical Point of Contact
AS2 Version	1.2
MDN Delivery	Sync
File Name	Content-Disposition: filename="Filename.ext"



NHRA-MVC Traceability Hub	RTH-Bahrain-UG Version 1 July 2021
User Guide for In-Country AGENTS/DISTRIBUTORS	Page 6 of 41

3 EPCIS Event Requirements

3.1 Event Data

The following sections define the event data that must be submitted to meet NHRA-MVC serialization requirements. NHRA-MVC requires adherence to the structure, flow, and documented GS1 EPCIS 1.2 standards outlined in this Guide.

3.1.1 Rules for Communicating Events to the Traceability Hub

Serial number data must be reported to NHRA-MVC Traceability Hub (RTH) in the following manner.

- a. All serial numbers contained in shipments imported to the Kingdom of Bahrain are to be reported as EPCIS 1.2 events.
- b. All serial numbers must be reported to the NHRA-MVC Traceability Hub as the Agents/Distributors receive the shipments.
- c. All serial numbers that are packed and sent to dispensers must be reported to the NHRA-MVC Traceability Hub when the Agents/Distributors send the shipments to the dispensers.

All EPCIS events within a message file (envelope) must be sorted in chronological order; with the oldest event appearing first. (Inbound Receive of the medicines must occur prior to any packing and shipping events related to shipments going to Dispensers).

Agents/Distributors sending the EPCIS events, must ensure that all messages are sent in the correct chronological order with the oldest first

Do not send intermediate OBSERVE events such as movement of serialized products within a warehouse for stocking purposes.

Any messages that must be sent again, should be sent in their entirety. Fragmented or partial messages will be rejected.



4 Performance Guidelines

To ensure all participants experience acceptable response times when reporting to the Traceability Hub, the NHRA-MVC Technical team has set these guidelines for sending events to the Traceability Hub.

If there are questions regarding the specifications, please contact the NHRA-MVC-Onboarding team at NHRA-MVC-Onboarding@rfxcel.com

4.1 Message Formats

Data Type	Format	Standards / Industry
Events	XML	Standard GS1 EPCIS 1.2

4.2 Data exchange Medium

Medium / Protocol	Supported file formats
AS2	XML

4.3 Parameters for Sending Events

Specification	Limits
File Size	15 MB
Events per minute	500
Events per EPCIS document	5000
Max Serial numbers in an event	50000
Max level of hierarchy	5
Interval between API calls	1 API call per 2 secs



4.4 Guidelines for Event Messages

4.4.1 Header

- The Agent/Distributor Sender ID (your GS1-assigned GLN Number) must appear in the header of the events sent to the Traceability Hub so that parallel processing can be effectively and efficiently managed.
- All events related to each other should be sent in one envelop as shown in the examples in this Guide. This is to allow for more efficient processing of the information.
- Use EPCIS in 1.2 schema

```
<epcis:Sender>  
  <epcis:Identifier Authority="GLN">1234567891234</epcis:Identifier>  
</epcis:Sender>
```

4.4.2 General Instructions:

- bizLocation element must be provided in each commission and aggregation event.
- The bizlocation element must contain the urn-formatted version of your GS1-assigned GLN Number to properly record the event in the Traceability Hub.

```
<bizLocation>  
  <id>urn:epc:id:sgln:1234567.12318.0</id>  
</bizLocation>
```

- Receiving and Shipping events do not have a bizlocation element.
- The Source Owning Party and Location elements of the Receiving and the Shipping event must contain the urn-formatted version of your GS1-assigned GLN Number to properly record the event in the Traceability Hub.

```
<sourceList>  
  <source type="urn:epcglobal:cbv:sdt:owning_party">urn:epc:id:sgln:1234567.12318.0</source>  
  <source type="urn:epcglobal:cbv:sdt:location">urn:epc:id:sgln:1234567.12318.0</source>  
</sourceList>
```

- Event ID must be provided to ensure uniqueness.
- Ordering of events in the envelope must be in the same way it is performed in real-time i.e. Receive & ship.
- There must be at least a 5-second delay between event timestamps.



4.4.3 Receiving Event:

- The Receiving event MUST contain the
 - Sender Owner (source/owning_party)
 - Sender Custodian (source/location)
 - Receiver Owner (destination/owning_party)
 - Receiver Custodian (destination/location)

4.4.4 Commissioning Event:

- The Commission events
 - Must be included for all SSCCs that are created for shipping the products to their destination.
 - MUST contain the the bizlocation element containing the urn-formatted version of your GS1-assigned GLN Number to properly record the event in the Traceability Hub.

4.4.5 Aggregate Event:

When the reporting company is capable of providing aggregation, it must be be sent to the Traceability Hub. Aggregation events will be required by the NHRA but are currently optional.

- You must provide explicit aggregate events for each level of packing that occurs.
- Aggregation can contain any combination of SGTINs and SSCCs in the parent-child creation. **See Diagram 1 [Examples of Parent-Child Hierarchies]** below for examples.
- Aggregate events should start at the smallest unit (the individual carton) and aggregate up to each successive level
 - EXAMPLE - unit to bundle first, then bundle to case next, then finally case to pallet.
- It is strongly recommended that different SSCC extension digits are used for different aggregation container types.

Diagram 1 – Examples of Parent-Child Hierarchies

Lowest Unit	Inner Pak / Bundle	Case	Partial Case	Pallet
SGTIN	SGTIN	SGTIN	SSCC	SSCC
SGTIN	SGTIN	SSCC	SSCC	SSCC
SGTIN	SSCC	SSCC	SSCC	SSCC

4.4.6 Ship Events

- Do not send aggregated packs and non-aggregated packs in same event.
- The Ship event MUST contain the



- Sender Owner (source/owning_party)
- Sender Custodian (source/location)
- Receiver Owner (destination/owning_party)
- Receiver Custodian (destination/location)

4.4.7 Voiding Shipments

Voiding events is not a common practice and will only be allowed under very limited and restricted circumstances.

Access to this function requires authorization and security authorization. You will need to contact the NHRA-MVC Support team for assistance if events need to be voided.

4.5 EPCIS Message Requirements

The NHRA-MVC requires the company shipping the products within the Kingdom of Bahrain to send the shipping information to the Traceability Hub, using the guidelines described above.

4.5.1 Standard Business Document Header Requirements

Standard Business Document Header Requirements			
HeaderVersion	1.0	Version of SBDH standard used. Set to "1.0"	<sbdh:HeaderVersion>1.0</sbdh:HeaderVersion>
Sender/Identifier	Mandatory GLN or SGLN	Identifies the sender of the document.	<sbdh:Sender> <sbdh:Identifier Authority="SGLN">urn:epc:id:sgln:89 01149.00000.0 </sbdh:Identifier> </sbdh:Sender>



Standard Business Document Header Requirements			
Receiver/ Identifier	Mandatory GLN or SGLN	Identifies the receiver of the document.	<pre><sbdh:Receiver> <sbdh:Identifier Authority=" SGLN"> urn:epc:id:sgln:8901149.00000.0 </sbdh:Identifier> </sbdh:Receiver></pre>
DocumentationId entification		Describes the document.	<pre><sbdh:DocumentIdentification> ... </sbdh:DocumentIdentification></pre>
Standard	Mandatory EPCGlobal	EPCGlobal is used for all EPCIS Documents.	<pre><sbdh:Standard>EPCGlobal</sbdh:St andard></pre>
TypeVersion	Mandatory 1.0	Constant value of 1.0 representing the current version that rFXcel supports.	<pre><sbdh:TypeVersion>1.0</sbdh:TypeV ersion></pre>
InstanceIdentifier	Mandatory Unique identifier	Description which contains reference information which uniquely identifies this instance of the Standard Business Document (SBD) between the Sender and the Receiver. This identifier identifies this document as being distinct from others. It is a xs:string defined field.	<pre><sbdh:InstanceIdentifier>000728289 92770024</sbdh:InstanceIdentifier></pre>



Standard Business Document Header Requirements			
Type	Mandatory Events	Describes the kind of EPCIS documents. For the purpose of this document only "Events" is used, but future versions will make use of additional values: MasterData, QueryControl-Request, QueryControl-Response, Query.	<sbdh:Type>Events</sbdh:Type>
CreationDateAndTime	Mandatory DateTime YYYY-MM-DDTHH:MM:SSZ	Date and time of the SBDH document creation. The value of the CreationDateAndTime element MUST be set to the date and time when the document's originating application or the parser created the document. This value should be populated by the trading 3PL and will typically differ from the time stamping of the message by the communications software.	<sbdh:CreationDateAndTime> 2016-08-01T18:00:45Z </sbdh:CreationDateAndTime>

4.5.2 Event Table

This table represents the various actions that will be taken against serial number by the company reporting the events to the Traceability Hub.

Partner Actions Taken Against Allocated Serial Numbers		
Event	Description	Expected from Partner
Commissioning Cases, Pallets	Occurs when a UID (e.g. SGTIN or SSCC) is physically applied or printed to an item or container.	All cases and logistic container commissions will be sent to the Traceability Hub.
Packaging Aggregations	Occurs when items are placed inside a parent container.	Only the final aggregation reflecting hierarchy at time of shipment will be sent to the Traceability Hub.



Partner Actions Taken Against Allocated Serial Numbers		
Event	Description	Expected from Partner
Shipping	Occurs when items are physically shipped from Partner's location.	Ship Events containing top level parent UID will be sent to the Traceability Hub at the time of shipment.

4.6 Event Definitions

The structure of the required events are shown in the following sections. The example XML file in **Appendix A** contains comments to guide the user regarding the various events and required elements/tags.

4.6.1 Title Tag

Title tag holds the master data values for both trade item and location, and the attributes defined in this section are conditional upon inclusion of any attributes within the open/close Tag.

EPCIS Tag Name	Type	Description	Requirement
EPCISMasterData	String	Title Tag	Conditional
VocabularyList	String	Title Tag	Conditional

4.6.2 Trade item master data attributes

All Product and Location Master Data must be uploaded via CSV or BrandSync. The Traceability Hub ignores master data specified in the EPCIS document header.

4.6.3 Definition for Receive Attributes

Receive events are required by the NHRA for each shipment of imported medicines received through Customs.

Element	Requirement	Comments	Example
---------	-------------	----------	---------



NHRA-MVC Traceability Hub	RTH-Bahrain-UG Version 1 July 2021
User Guide for In-Country AGENTS/DISTRIBUTORS	Page 14 of 41

<eventTime>	Mandatory	Shall be formatted in ISO 8601 standard. This should represent the date and time that the event occurred.	2007-07-26T21:41:19Z 2007-07-26T22:41:19+01:00
<eventTimeZoneOffset>	Mandatory	Used to communicate the time zone offset value where the event physically occurred. Example +01:00 means CET	-05:00 +01:00
<epcList>	Mandatory	epcList should communicate the top-level parent UIDs of items included in the shipment in urn format. For example, only the top-level pallet SSCC may be included.	<epcList> <epc>urn:epc:id:sscc:123456.7 100 0000000</epc> </epcList>
<action>	Mandatory	Fixed value	<action>OBSERVE</action>
<bizstep>	Mandatory	Fixed value Used to communicate the activity taking place	<bizStep>urn:epcglobal:cbv:bizstep:receiving</bizStep>
<disposition>	Mandatory	Fixed value Indicates the state of the shipment	<disposition>urn:epcglobal:cbv:disp:in_progress</disposition>
<readpoint>	Mandatory	Used to indicate the location where the event took place.	<readPoint> <id>urn:epc:id:sgln:5036519.00 00 1.0</id> </readPoint>

4.6.4 Definition for Commission Attributes

The EPCIS will include the commission information for each SSCC used for the shipments from the Agents/Distributors. The following table indicates the EPCIS message structure for the commission events. Commissions will include SGTIN and SSCC.

Element	Requirement	Comments	Example
<eventTime>	Mandatory	Shall be formatted in ISO 8601 standard. This should represent the date and time that the event occurred.	2007-07-26T21:41:19Z 2007-07-26T22:41:19+01:00



Element	Requirement	Comments	Example
<eventTimeZoneOffset>	Mandatory	Used to communicate the time zone offset value where the event physically occurred. Example +01:00 means CET	-05:00 +01:00
<epcList>	Mandatory	Use to communicate the UIDs (e.g. SSCCs) of items included in the event in URN format.	<epcList> <epc> urn:epc:id:sscc:1506777.5100070399> </epcList>
<action>	Mandatory	Fixed value	<action> ADD </action>
<bizStep>	Mandatory	Fixed value	<bizStep>urn:epcglobal:cbv:bizstep:c ommissioning </bizStep>
<disposition>	Mandatory	Fixed value	<disposition>urn:epcglobal:cbv:disp:a ctive </disposition>
<readPoint>	Mandatory SGLN	Must be the SGLN corresponding to the location where the commissioning event occurred in URN format. Use SGLN Extensions to depict granular locations.	<readPoint> <id>urn:epc:id:sgln:123456.789101.0 </id> </readPoint>
<bizLocation>	Mandatory	Business location must contain the Agent/Distributor SGLN	<bizLocation> <id>urn:epc:id:sgln:123456.000000.0 </id> </bizLocation>
<extension>	Not used for SSCC	Fixed value Identifies the use of extension elements in the EPCIS	
<ilmd>	Not used for SSCCs	Do not send fr SSCCs	None
< eventID>	Optional	Although this is an optional field, it is strongly advised to specify this field in each event. This must be a unique identifier for each event. If specified, it must be a UUID as recommended by GS1.	< eventID>urn:uuid:f81d4fae-7dec-11d0-a765-00a0c91e6bf6</ eventID>



NHRA-MVC Traceability Hub	RTH-Bahrain-UG Version 1 July 2021
User Guide for In-Country AGENTS/DISTRIBUTORS	Page 16 of 41

4.6.5 Definition for Aggregation Attributes

Aggregation events will be required by the NHRA but are currently optional. If the reporting company is capable of providing aggregation, it can be sent to the Traceability Hub.

The EPCIS will include the aggregation information of each UID. The following table indicates the EPCIS message structure for the aggregation events. Aggregation will include SGTIN and SSCC information.

Element	Requirement	Comments	Example
<eventTime>	Mandatory	Shall be formatted in ISO 8601 standard. This should represent the date and time that the event occurred.	2007-07-26T21:41:19Z 2007-07-26T22:41:19+01:00
<eventTimeZoneOffset>	Mandatory	Used to communicate the time zone offset value where the event physically occurred. Example +01:00 means CET	-05:00 +01:00
<parentID>	Mandatory	The parentID communicates the UID of the parent container for the following children.	<parentID>urn:epc:id:sgtin:0310734.200562.1142710399</parentID>
<childEPCs>	Mandatory	The childEPCs should communicate the UIDs of items being added to the parent in the parentID.	<childEPCs> <epc>urn:epc:id:sgtin:9904321.000821.25P540M3BC93</epc> <epc>urn:epc:id:sgtin:9904321.000821.N8YYC1Z7TBZG</epc> <epc>urn:epc:id:sgtin:9904321.000821.317D7HD55KYP</epc> </childEPCs>
<action>	Mandatory	Fixed value	<action> ADD </action>
<bizStep>	Mandatory	Fixed value Used to communicate the activity taking place	<bizStep>urn:epcglobal:cbv:bizstep: packing </bizStep>
<disposition>	Mandatory	Fixed value	<disposition>urn:epcglobal:cbv:disposition: in_progress </disposition>



Element	Requirement	Comments	Example
<readPoint>	Mandatory	Use SGLN to indicate the location where the event took place.	<readPoint> <id>urn:epc:id:sgln:030093.000340.0</id> </readPoint>
<bizLocation>	Mandatory	Business location must contain the MAH SGLN	<bizLocation> <id>urn:epc:id:sgln:123456.000000.0</id> </bizLocation>
<eventID>	Optional	Although this is an optional field, it is strongly advised to specify this field in each event. This must be a unique identifier for each event. If specified, it must be a UUID as recommended by GS1.	<eventID>e04d494e-916b-11e6-ae22-56b6b6499611</eventID>

4.6.6 Definition for Shipping Attributes

The EPCIS Ship event will include the ship information of each UID. The following table indicates the EPCIS message structure for the ship event.

Element	Requirement	Comments	Example
<eventTime>	Mandatory	Shall be formatted in ISO 8601 standard. This should represent the date and time that the event occurred.	2007-07-26T21:41:19Z 2007-07-26T22:41:19+01:00
<eventTimeZoneOffset>	Mandatory	Used to communicate the time zone offset value where the event physically occurred. Example +01:00 means CET	-05:00 +01:00



Element	Requirement	Comments	Example
<epcList>	Mandatory	epcList should communicate the top-level parent UIDs of items included in the shipment in urn format. For example, only the top-level pallet SSCC may be included.	<epcList> <epc>urn:epc:id:sscc:123456.7100000000</epc> </epcList>
<action>	Mandatory	Fixed value	<action> OBSERVE </action>
<bizstep>	Mandatory	Fixed value Used to communicate the activity taking place	<bizStep>urn:epcglobal:cbv:bizstep: shipping </bizStep>
<disposition>	Mandatory	Fixed value Indicates the state of the shipment	<disposition>urn:epcglobal:cbv:disposition: in_transit </disposition>
<readpoint>	Mandatory	Used to indicate the location where the event took place.	<readPoint> <id>urn:epc:id:sgln:5036519.00001.0</id> </readPoint>
<bizTransactionList>	Mandatory GLN Number Transaction Number	This element will always contain at least the following: urn:epcglobal:cbv:bt:[GLN]:[TransID] <i>Note: the business transaction types below, are also supported by nhra-mvc Hub and can be added to the bizTransactionList section</i> <ul style="list-style-type: none"> • urn:epcglobal:cbv:btt:desadv • urn:epcglobal:cbv:btt:po • urn:epcglobal:cbv:btt:rma • urn:epcglobal:cbv:btt:inv 	<bizTransactionList> <bizTransaction type="urn:epcglobal:cbv:btt:desadv">urn:epcglobal:cbv:bt: 1234567000008:20160929C </bizTransaction> </bizTransactionList> OR <bizTransactionList> <bizTransaction type="urn:epcglobal:cbv:btt:desadv">urn:epcglobal:cbv:bt: 1234567000008:20160929C </bizTransaction> <bizTransaction type="urn:epcglobal:cbv:btt:po">urn:epcglobal:cbv:bt: 2016A22 </bizTransaction> > </bizTransactionList>
<extension>	Mandatory	Fixed value	

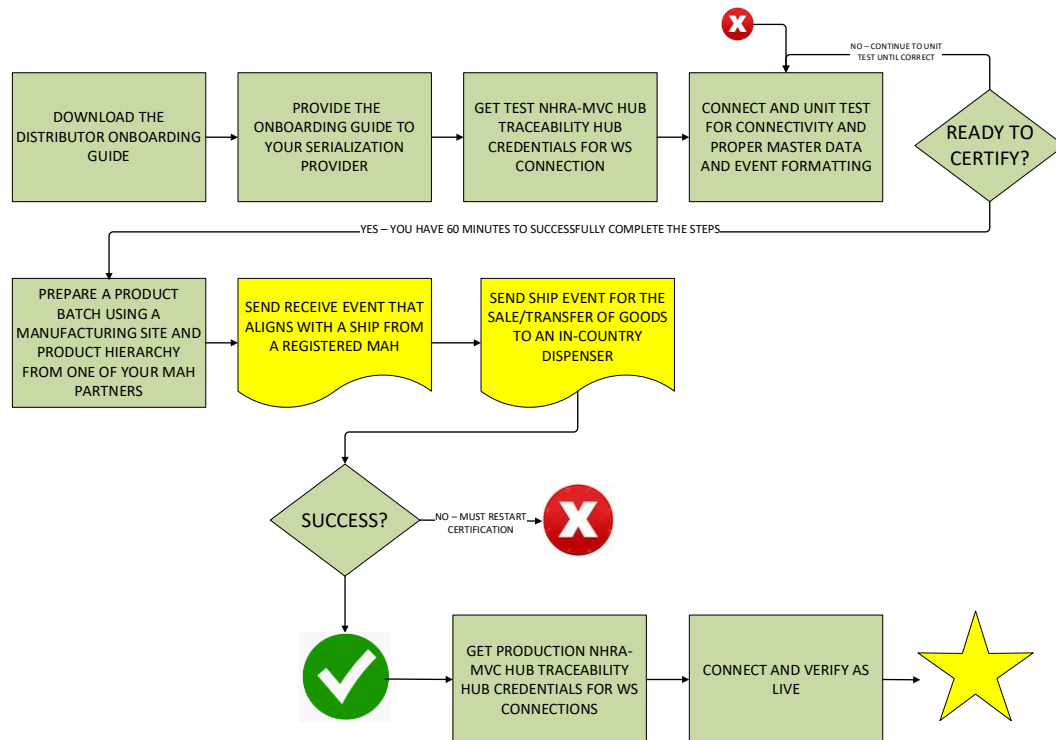


Element	Requirement	Comments	Example
<sourceList>	Mandatory owning_party and location	The Owing Party and the Location must equal the MAH SGLN Sourcetype is from epc global common business vocabulary list	<sourceList> <sourcetype="urn:epcglobal:cbv:sdt: owning_party ">urn:epc:id:sgln:123456.000000.0</source> <sourcetype="urn:epcglobal:cbv:sdt: location "> urn:epc:id:sgln:123456.000000.0</source> </sourceList>
<destinationList>	Mandatory owning_party and location	Describes the intended receiving party for this shipment and is represented by SGLN data. Destinationtype is from epc global common business vocabulary list	<destinationList> <destinationtype="urn:epcglobal:cbv:sdt: owning_party ">urn:epc:id:sgln:07722.0005001.0</destination> <destinationtype="urn:epcglobal:cbv:sdt: location ">urn:epc:id:sgln:07722.0005001.0</destination> <destinationList>
</extension>			
<eventID>	Optional	Although this is an optional field it is strongly recommended to specify this field in each event. This must be a unique identifier for each event. If specified, it must be a UUID as recommended by GS1.	<eventID>urn:uuid:e04d4ec6-916b-11e6-ae22-56b6b6499611</eventID>



5 Acceptance Criteria

NHRA-MVC Technical team will review the connection and all events being sent to the Traceability Hub. The Technical Point of Contact for your company will be informed of results as it progresses from the testing phase to determine certification for PRODUCTION. Connectivity will be approved based on the testing and verification output results.





6 SAMPLE XML FILE: EPCIS 1.2 file formats

6.1 EPCIS Receive Event Example (Receiving the SSCC cases or Pallets)

```
<?xml version="1.0" encoding="UTF-8" standalone="yes"?>
```

```
<ns3:EPCISDocument xmlns:cbvmda="urn:epcglobal:cbv:mda" creationDate="2017-05-03T12:35:33.650+05:30"
schemaVersion="1.2" xmlns:ns2="http://www.unece.org/cefact/namespaces/StandardBusinessDocumentHeader"
xmlns:ns3="urn:epcglobal:epcis:xsd:1" >
```

```
<EPCISHeader>
```

```
<ns2:StandardBusinessDocumentHeader>
```

```
<ns2:HeaderVersion>1.0</ns2:HeaderVersion>
```

```
<ns2:Sender>
```

```
<ns2:Identifier Authority="GLN">8928998989899</ns2:Identifier>
```

```
</ns2:Sender>
```

```
<ns2:Receiver>
```

```
<ns2:Identifier Authority="GLN">7848798734738</ns2:Identifier>
```

```
</ns2:Receiver>
```

```
<ns2:DocumentIdentification>
```

```
<ns2:Standard>EPCglobal</ns2:Standard>
```

```
<ns2:TypeVersion>1.0</ns2:TypeVersion>
```

```
<ns2:InstanceIdentifier>urn:uuid:26196612-f969-4afa-bc00-
7274955267c3</ns2:InstanceIdentifier>
```

```
<ns2:Type>Events</ns2:Type>
```

```
<ns2:CreationDateAndTime>2017-05-03T12:35:33.650+05:30</ns2:CreationDateAndTime>
```

```
</ns2:DocumentIdentification>
```

```
</ns2:StandardBusinessDocumentHeader>
```

```
</EPCISHeader>
```

```
<EPCISBody>
```

```
<EventList>
```

```
<ObjectEvent>
```

```
<eventTime>2018-07-14T21:15:12Z</eventTime>
```

```
<eventTimeZoneOffset>-05:00</eventTimeZoneOffset>
```



```
<epcList>
  <epc>urn:epc:id:sscc:1506777.71000703990</epc>
  <epc>urn:epc:id:sscc:1506777.71000703991</epc>
  <epc>urn:epc:id:sscc:1506777.71000703992</epc>
</epcList>
<action>OBSERVE</action>
<bizStep>urn:epcglobal:cbv:bizstep:receiving</bizStep>
<disposition>urn:epcglobal:cbv:disp:in_progress</disposition>
<readPoint>
  <id>urn:epc:id:sgln:1506777.00001.0</id>
</readPoint>
<bizTransactionList>
  <bizTransaction type="urn:epcglobal:cbv:btt:RMA">PSRECEIVE1234</bizTransaction>
</bizTransactionList>
<extension>
  <sourceList>
    <source
type="urn:epcglobal:cbv:sdt:owning_party">urn:epc:id:sgln:1506777.00001.0</source>
    <source
type="urn:epcglobal:cbv:sdt:location">urn:epc:id:sgln:1506777.00001.0</source>
  </sourceList>
  <destinationList>
    <destination
type="urn:epcglobal:cbv:sdt:owning_party">urn:epc:id:sgln:15067779.789101.0</destination>
    <destination
type="urn:epcglobal:cbv:sdt:location">urn:epc:id:sgln:15067779.789101.0</destination>
  </destinationList>
</extension>
  <gs1ushc:eventID>urn:uuid:0083eb36-6844-42a7-8a4b-aecd8e451b30</gs1ushc:eventID>
</ObjectEvent>
</EventList>
</EPCISBody>
```



</ns3:EPCISDocument>

6.2 EPCIS Event Example (Shipments From Agents/Distributors)

<?xml version="1.0" encoding="UTF-8" standalone="yes"?>

<ns3:EPCISDocument xmlns:cbvmda="urn:epcglobal:cbv:mda" creationDate="2017-05-03T12:35:33.650+05:30" schemaVersion="1.2" xmlns:ns2="http://www.unece.org/cefact/namespaces/StandardBusinessDocumentHeader" xmlns:ns3="urn:epcglobal:epcis:xsd:1" >

<EPCISHeader>

<ns2:StandardBusinessDocumentHeader>

<ns2:HeaderVersion>1.0</ns2:HeaderVersion>

<ns2:Sender>

<ns2:Identifier Authority="GLN">8928998989899</ns2:Identifier>

</ns2:Sender>

<ns2:Receiver>

<ns2:Identifier Authority="GLN">7848798734738</ns2:Identifier>

</ns2:Receiver>

<ns2:DocumentIdentification>

<ns2:Standard>EPCglobal</ns2:Standard>

<ns2:TypeVersion>1.0</ns2:TypeVersion>

<ns2:InstanceIdentifier>urn:uuid:26196612-f969-4afa-bc00-7274955267c3</ns2:InstanceIdentifier>

<ns2:Type>Events</ns2:Type>

<ns2:CreationDateAndTime>2017-05-03T12:35:33.650+05:30</ns2:CreationDateAndTime>

</ns2:DocumentIdentification>

</ns2:StandardBusinessDocumentHeader>

</EPCISHeader>

<EPCISBody>

<EventList>

<!-- COMMISSION EVENT FOR SHIPPING CONTAINERS - 4 CASES 1 PALLET -->

<ObjectEvent>



```
<eventTime>2017-07-14T08:21:27Z</eventTime>
<eventTimeZoneOffset>+05:30</eventTimeZoneOffset>
<baseExtension>
  <eventID>urn:uuid:f81d4fae-7dec-11d0-a765-00a0c91e6bc3</eventID>
</baseExtension>
<epcList>
  <epc>urn:epc:id:sscc:1506777.51000703990</epc>
  <epc>urn:epc:id:sscc:1506777.51000703991</epc>
  <epc>urn:epc:id:sscc:1506777.51000703992</epc>
  <epc>urn:epc:id:sscc:1506777.51000703993</epc>
  <epc>urn:epc:id:sscc:1506777.71000703500</epc>
</epcList>
<action>ADD</action>
<bizStep>urn:epcglobal:cbv:bizstep:commissioning</bizStep>
<disposition>urn:epcglobal:cbv:disp:active</disposition>
<!-- Agent/Distributor SGLN value -->
<readPoint>
  <id>urn:epc:id:sgln:1506777.00001.0</id>
</readPoint>
<!--SGLN value must contain location identifiers (GLNs / SGLNs) that belong to the
Agent/Distributor -->
<bizLocation>
  <id>urn:epc:id:sgln:1506777.00001.0</id>
</bizLocation>
</ObjectEvent>
<!-- AGGREGATION OF SHIPPERS INTO A PALLET-->
<AggregationEvent>
  <eventTime>2018-07-14T19:45:06Z</eventTime>
  <eventTimeZoneOffset>+05:30</eventTimeZoneOffset>
  <baseExtension>
    <eventID>urn:uuid:f81d4fae-7dec-11d0-a765-00a0c91e6bb0</eventID>
```




```
</baseExtension>
<parentID>urn:epc:id:sscc:1506777.71000703500</parentID>
<childEPCs>
  <epc>urn:epc:id:sscc:1506777.51000703990</epc>
  <epc>urn:epc:id:sscc:1506777.51000703991</epc>
  <epc>urn:epc:id:sscc:1506777.51000703992</epc>
  <epc>urn:epc:id:sscc:1506777.51000703993</epc>
</childEPCs>
<action>ADD</action>
<bizStep>urn:epcglobal:cbv:bizstep:packing</bizStep>
<disposition>urn:epcglobal:cbv:disp:in_progress</disposition>
<readPoint>
  <!-- Partner SGLN value -->
  <id>urn:epc:id:sgln:1506777.00001.0</id>
</readPoint>
<!-- SGLN value must contain location identifiers (GLNs / SGLNs) that belong to the
Agent/Distributor -->
<bizLocation>
  <id>urn:epc:id:sgln:1506777.00001.0</id>
</bizLocation>
</AggregationEvent>
<!-- SHIP from Agent / Distributor to the destination -->
<ObjectEvent>
  <eventTime>2018-07-14T22:30:30Z</eventTime>
  <eventTimeZoneOffset>+05:30</eventTimeZoneOffset>
  <baseExtension>
    <eventID>urn:uuid:f81d4fae-7dec-11d0-a765-00a0c91e6bc6</eventID>
  </baseExtension>
  <epcList>
    <epc>urn:epc:id:sscc:1506777.71000703500</epc>
  </epcList>
```



```
<action>OBSERVE</action>
<bizStep>urn:epcglobal:cbv:bizstep:shipping</bizStep>
<disposition>urn:epcglobal:cbv:disp:in_transit</disposition>
<!-- Partner SGLN value -->
<readPoint>
    <id>urn:epc:id:sgln:1506777.00001.0</id>
</readPoint>
<bizTransactionList>
    <!-- Biz Transaction PO number -->
    <bizTransaction type="urn:epcglobal:cbv:btt:po">urn:epcglobal:cbv:bt:
1506777000018:201601A</bizTransaction>
</bizTransactionList>
<extension>
    <sourceList>
        <!-- Sender Owner SGLN value must contain location identifiers (GLNs / SGLNs)
that belong to the Agent/Distributor -->
        <source
type="urn:epcglobal:cbv:sdt:owning_party">urn:epc:id:sgln:1506777.00001.0</source>
        <!-- Sender Facility\Location SGLN value must contain location identifiers (GLNs /
SGLNs) that belong to the Agent/Distributor -->
        <source
type="urn:epcglobal:cbv:sdt:location">urn:epc:id:sgln:1506777.00001.0</source>
    </sourceList>
    <destinationList>
        <!-- Receiver Owner SGLN Value-->
        <destination
type="urn:epcglobal:cbv:sdt:owning_party">urn:epc:id:sgln:5853212.89898.0</destination>
        <!-- Receiver Facility\Location SGLN value -->
        <destination
type="urn:epcglobal:cbv:sdt:location">urn:epc:id:sgln:5853212.89898.0</destination>
    </destinationList>
</extension>
</ObjectEvent>
```



</EventList>

</EPCISBody>

</ns3:EPCISDocument>



7 Change History

The Change History provides a guide to all significant modifications to the document that will influence the data exchange.

Date	Change
July 1, 2021 Rev 1.0	Created on July 1, 2021 for the Agents / Distributors within the Kingdom of Bahrain